



公司宣传手册
COMPANY BROCHURE



Table of CONTENT

用智慧和勤劳，
开拓
绿色能源之路！

Opening up the avenue of green energy,
with our intelligence and diligence!

01.	关于蓝太 ABOUT LANTAI	4
02.	业务介绍 BUSINESS INTRO	10
03.	工程业绩 PROJECT PERFORMANCE	14
04.	研究成果 RESEARCH FRUITS	23
05.	联系我们 CONTACT US	27



www.zjltee.com.cn

01. 关于蓝太 ABOUT LANTAI

以节能减排新技术为核心、以工程总承包为主业的服务型企业

CORE: ENERGY SAVING AND EMISSION REDUCING

MAIN BUSINESS: EPC SERVICE



公司简介 COMPANY INTRO

浙江蓝太能源工程有限公司是以海外能源工程总承包为主业的综合型工程公司。专业从事化石、生物质燃料及危险废弃物焚烧汽电共生工程的技术开发、工程设计、工程建设、运行维护服务、工程总承包等工作。

我公司与海外广大客户建立了良好的合作关系，树立了良好形象，赢得客户的尊重与信任。

Zhejiang Lantai Energy is an integrated engineering company which mainly works on overseas EPC projects. It is specialized in cogeneration project of fossil, biomass fuels, hazardous waste incineration. Our business contains technology development, engineering design, construction, operation maintenance, and EPC project, etc.

Our company has established a good cooperative relationship with many overseas customers, set up a good reputation and won the respect and trust of them.

企业价值 COMPANY VALUE

1

技术领航，工程立业，致力环保，共享成长，使客户、员工、股东满意

Technology pilotage, engineering priority, dedicating green, sharing growth, giving satisfaction to customers, employees and shareholders.

2

建设一流节能环保能源工程，为顾客创造价值

Constructing a first-class project of energy saving and environmental protection.

3

创新、诚信、高效、奉献

Innovation, Integrity, Efficiency, Dedication.

技术背景

TECHNOLOGY BACKGROUND

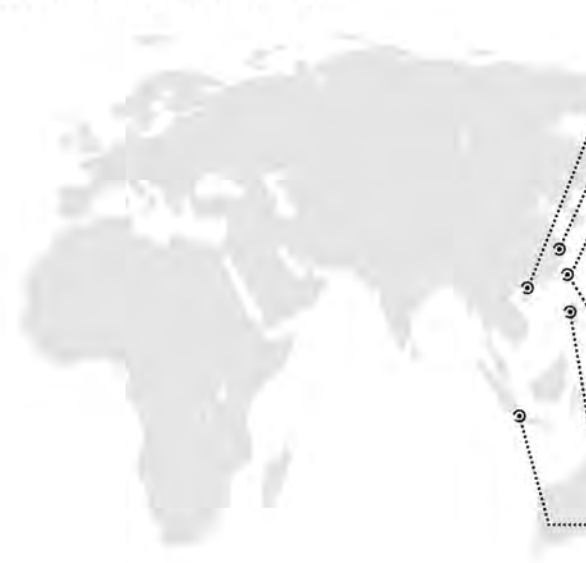
我司拥有强大的专业团队，技术力量雄厚，特色技术先进。公司核心团队来自于国内大型设计院及知名总承包公司，拥有10至30年的设计及管理经验，高效高质量对公司的EPC项目进行全过程管理。

Our company has some strong professional teams with advanced technology. The staff of core team come from many large design institutes or famous enterprises in China, and most of them have 10 to 30-year experience in engineering design and management. The whole process of EPC project management in LTE is of efficiency and high-quality.



公司分支机构

COMPANY BRANCH



- 蓝太能源杭州总部
HANGZHOU HEADQUARTERS
- 香港办事处/HONGKONG BRANCH
SFG ENERGY EQUIPMENT CO., LTD.
- 台湾蓝迪工程有限公司/TAIWAN,
TAIWAN LANDI ENGINEERING CO., LTD.
- 台湾永茂环保科技有限公司/TAIWAN
YONGMAO ENVIRONMENTAL
PROTECTION TECHNOLOGY CO., LTD.
- 菲律宾分公司/PHILIPPINES BRANCH
COMBUSTION RETROFITTING CO., INC.
- 印尼办事处/INDONESIA BRANCH
REPRESENTATIVE OFFICE

公司主要发展历程

COMPANY MAIN HISTORY

2015

蓝太能源正式成立
Laitai energy established

2016

台湾永成项目签订启动
WSH (TW) project officially started

2017

台湾日皓项目签订启动
JSP project (TW) officially started

2018

飞灰熔融炉研发成功
Fly-ash melting furnace succeeded
台湾永丰余项目签订启动
YFY project (TW) officially started
迁址望京新办公楼
Moved to Vertex World, the new office

未来
FUTURE

一同期待……
Looking forward……

证书及专利

CERTIFICATE & PRACTICALITY PATENT



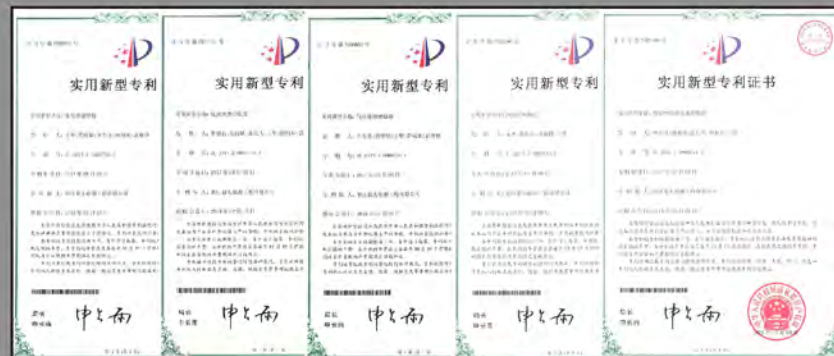
营业执照
BUSINESS LICENSE



太原锅炉授权证书
CERTIFICATE OF AUTHORIZATION FROM TAIYUAN BOILER



高温灰冷却和输送系统 High Temp. ash cooling and conveying system
RDF造粒机 RDF pelletizer
电石显热回收装置 Heat recovering device for calcium carbide
高温电除尘用加强阳极板 Strengthening anode plate for high Temp. electrostatic precipitator



雾化液液喷枪 Atomized waste spray gun
废液焚烧炉装置 Waste incinerator device
气化废液燃烧器 Burner for gasification waste
污泥送料装置 Sludge feeding device
废弃物玻璃化处理装置 Waste vitrification treatment device



进出口许可证
Import and export licence

战略合作伙伴 COOPERATION PARTNER



太原锅炉集团有限公司
——电站锅炉大型供应商
Taiyuan Boiler Group Co., Ltd.
——Power station EPC engineering integrated supplier

上海申航进出口有限公司
——中国航天科技集团全资子公司（世界500强企业）
Shanghai Shenhong import and Export Co., Ltd.
——China Aerospace Science and Technology Group wholly owned subsidiary
(Top 500 enterprises in the world)

核心业务方向 CORE BUSINESS ORIENTATION



热电项目
Thermoelectric project

余热、垃圾、生物质发电
Electricity generation: Waste heat, garbage, biomass

烟气脱硫、污泥处置
Flue gas desulphurization and sludge disposal

海外项目设备成套
Complete sets of equipment for overseas projects



02. 业务介绍 BUSINESS INTRO

1

简化型CFB锅炉岛 SIMPLIFIED CFB

10~35t/h, 旋风分离器与炉膛共用模式壁结构, 简化型工业锅炉岛。支持多种燃料, 投资省, 运转费用低。

10~35 t/h, cyclone separator shares membrane wall with combustion chamber. Simplified CFB boiler island. Various fuels, low investment and running cost.

2

第三代CFB锅炉岛 GENERATION 3 CFB

25~1000t/h, 环保型CFB, 饱和蒸汽工业锅炉岛及电站锅炉岛EPC工程。

25~1000 t/h, third-generation eco-friendly CFB, saturated steam industrial boiler island and boiler island EPC project.

3

电站EPC工程 POWER PLANT EPC PROJECT

125MW以下燃煤、燃油、燃气、生物质、污泥、垃圾电厂EPC工程。

Undertake coal-fired, fuel, gas, biomass, sludge and garbage power station EPC project which is under 125MW.

4

烟气处理领域 FLUE GAS TREATMET

SNCR、SCR、臭氧低温脱硝、FGD (钠碱、镁法)、高温除尘、湿式静电等烟气处理工程。

Fuel gas treatment like SNCR, SCR, Ozone low temperature DeNO_x, FGD (alkaline sodium, magnesium), high-temperature dust removal, wet electrostatic way.

5

飞灰熔融炉 FLY ASH MELTING FURNACE

等离子飞灰熔融, 1500°C高温危废处理, 垃圾焚烧厂飞灰, 工业除尘飞灰。

Plasma fly ash melts. Temperature at 1500°C. Disposal of fly ash, waste incineration plant fly ash and industrial dust fly ash.

主营业务

MAIN BUSINESS



第三代CFB锅炉岛 III CFB BOILER

炉内脱硫效率超95%。原产小于50ppm, SNCR保证NO_x排放小于30ppm。
The DeSO_x efficiency is over 95%. The original fuel is less than 50PPm, and SNCR can guarantee NO_x emission less than 30ppm.



烟气处理工程 FUEL GAS TREATMENT PROJECT

高温低温处理, 脱硫脱硝系统。粉尘排放可达5~10mg/Nm³。
High or low Temp. treatment, deSO_x and deNO_x system. Dust emission reaches 5-10mg/Nm³



电站EPC工程

POWER PLANT EPC
太锅集团第三代CFB, 达到节能要求, 提高电站的整体效能。
The 3 generation CFB of Taiguo Group meets the requirements of energy saving and improves the efficiency of the power plant.



危废处理 WASTE TREATMENT

等离子垃圾飞灰熔融, 1500°C, 飞灰处理, 危废无氧高温分解。
Plasma garbage fly ash melts. At 1500°C. Disposal of fly ash, waste incineration plant fly ash and industrial dust fly ash.

其他配套设备

OTHER ACCESSORIES



气力输灰

Pneumatic ash convey
提供先进、优质、可靠的物料气力输送设备系统。温度区间为140至600°C。
Provide advanced and reliable material pneumatic conveying equipment system. The temperature range is from 140 to 600 °C.



高温电除尘 High Temp. ESP

绝缘子耐受400°C高温, 并采用热风保温, 同时吊打分开的结构, 保证其使用寿命。
Insulator, which is isolated by hot air can withstand 400 °C. while its lifting-rapping separation structures ensures the service life.



厂用制成除尘 Dust collector

湿式除尘, 无需滤芯, 无堵塞, 效果恒定, 维护成本低, 自动清淤。
No filter, no clogging, constant quality, low maintenance cost, automatic desludging.



工业破碎机 Industrial crusher

欧洲固废破碎技术, 提供固体废物回收解决方案。
European solid waste crusher technology, providing solid waste recycling solutions.



皮带传输机 Belt conveyer

提供各类物料输送用全系列机械式传输设备。
Provides a full range of mechanical transmission equipment for all kinds of material transportation.



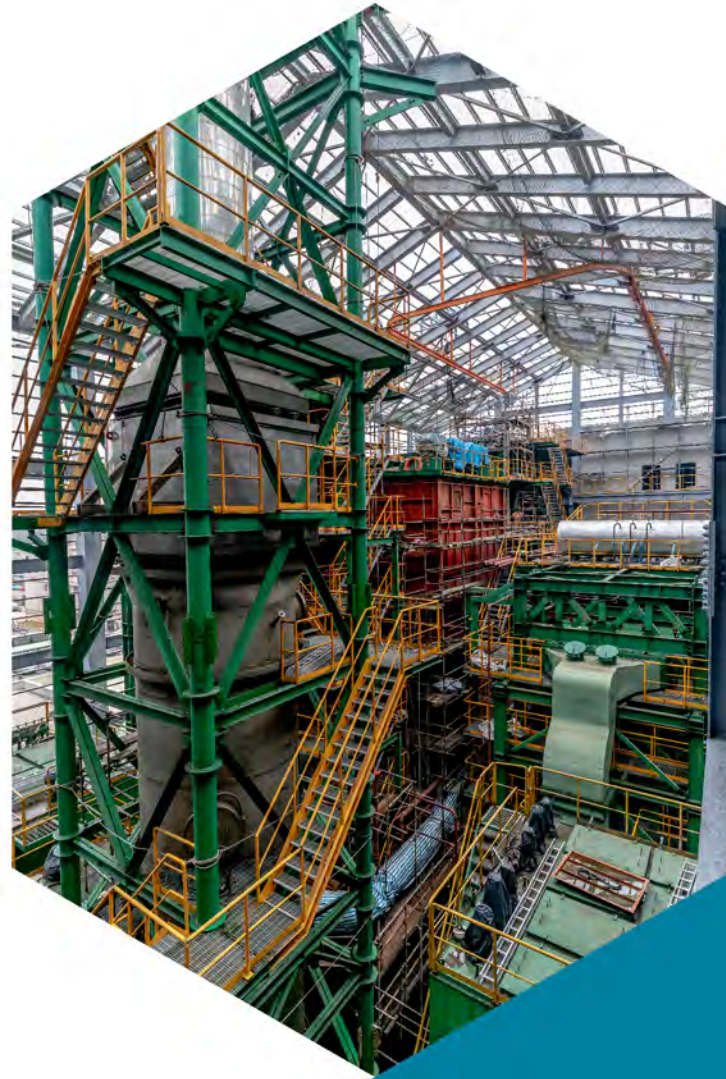
锅炉备品配件 Boiler accessories

风机, 筛分机, 阀门, 锅炉换热部件, 除氧器, 焚化炉, 耐火材料
Fan, crusher, valve, heat exchange component, deaerator, incinerator, refractory material etc..

业务定位 BUSINESS ORIENTATION

公司以工程总承包为核心，致力资源综合利用与环境保护等技术的研究及开发，公司具有多项专利，并充分依托太原锅炉集团及清华大学的综合优势，积极开拓技术咨询、技术研发及EPC总承包等业务。

With the core of the EPC project, LANTAI ENERGY is committed to the integrated use of resources and to the research and development that the technology focuses on environmental protection. LANTAI has owned 11 utility model patents, and relies on the comprehensive advantages of Taiyuan boiler and Tsinghua university. LANTAI actively develops the business model of technical consulting, technology research and development and EPC project.



公司业绩 COMPANY PERFORMANCE

菲律宾
PHILIPPINES

COMBUSTION RETROFITTING CO., INC.
1x16T/H BFB 锅炉岛技术改造
1x16T/H TECHNICAL REFORM OF BOILER ISLAND
1x22T/H BFB 锅炉岛ECO改造
1x22T/H ECO REFORM OF BFB BOILER ISLAND

印度尼西亚
INDONESIA

PT.CHEIL JEDANG INDO.
4x30T/H BFB煤存储筛分破碎系统
BFB COAL STORAGE AND CRUSHING SYSTEM
PT.CHEIL JEDANG INDO.
厂区用飞灰除尘系统 DUST REMOVAL SYSTEM
2x33M³/H, 2x24M³/H, 1x19M³/H

PT.BUKIT MURIA JAYA
厂区煤存储筛分破碎系统
COAL STORAGE AND CRUSHING SYSTEM
PT.BUKIT MURIA JAYA
1x20T/H 锅炉ESP及气力输送系统
BOILER ESP AND PNEUMATIC CONVEYING SYSTEM

日皓造纸 JSP
1x25T/H RDF 混烧CFB锅炉岛EPC工程
RDF MIXED CFB BOILER ISLAND EPC PROJECT
正隆后里厂 CHENGLOONG
1x45T/H CFB锅炉岛吹灰系统改造、
风帽及冷渣机更换
CFB BOILER SOOT BLOWING SYSTEM REFORM
AND REPLACEMENT OF AIR CAP
AND SLAG COOLER
正隆后里厂 CHENGLOONG
余热锅炉岛吹灰系统SNCR系统增建
SNCR SYSTEM FOR THE SOOT BLOWING SYSTEM
OF WASTE HEAT BOILER ISLAND
永丰余新屋厂 YFY
1x70T/H 锅炉岛EPC工程 (RDF+废轮胎)
BOILER ISLAND EPC PROJECT (RDF+SCRAP TIRE)

永成环科 WSH
3x1T/H 飞灰熔融EPC工程
Fly Ash Melting EPC ENGINEERING
永成环科 WSH
25T/H 污泥焚烧, CFB+10T/H 固废焚烧,
5MW 电站EPC工程
25T/H CFB, 10T/H WASTE BOILER,
5MW STEAM TURBINE GENERATOR SET

太锅
TAI GROUP

蓝太
LANTAI

中国台湾
TAIWAN, CHINA

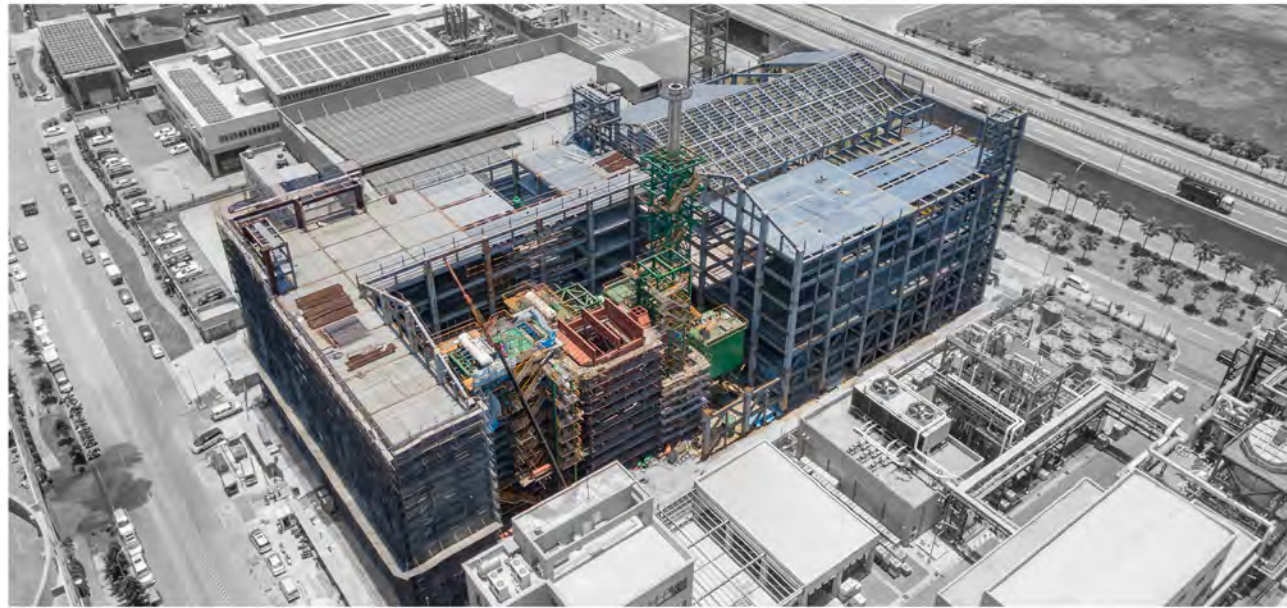
乾安县聚太供热有限责任公司
QIANAN JUTAI HEATING CO., LTD.
TG-150/9.81-S, 秸秆/STRAW
黑龙江中鑫热电有限责任公司
HEILONGJIANG ZHONGXIN THERMAL POWER CO., LTD.
TG-130/13.73-S, 秸秆/STRAW
山东京能生物质发电有限公司
SHANDONG JINGNENG MATERIAL POWER GENERATION CO., LTD.
TG-130/9.81-S, 玉米秆, 果树枝/CORN STALK, FRUIT BRANCH
徐州承运生物质热电有限公司
XUZHOU CHENGYUN BIOMASS THERMAL POWER CO., LTD.
TG-75/9.81-S, 垃圾、生物质/GARBAGE AND BIOMASS
大同富乔垃圾焚烧发电有限公司
DATONG FUQIAO WASTE INCINERATION POWER
GENERATION CO., LTD.
TG-75/3.82-L, 垃圾、生物质/GARBAGE AND BIOMASS

韩国SUNTEK ENERGY株式会社
SUNTEK ENERGY CO., LTD. KOREA
TG-35/3.82-S, 棕榈壳, 秸秆/PALM SHELL
AND STRAW
四川中科瑞能电力工程有限公司
SICHUAN ZHONGKE RUINONG ELECTRIC
POWER ENGINEERING CO., LTD.
TG-25/3.82-S, 玉米秆、小麦秆/CORN STALK,
AND STRAW

03.工程业绩

PROJECT PERFORMANCE

永成环科 WING SHING HUANKE, TAIWAN, CHINA



污泥及废液焚烧汽电共生项目

SLUDGE AND WASTE INCINERATION
COGENERATION PROJECT

25t/hCFB+10t/h废液炉+5MW汽轮发电机组
25t/h CFB, 10t/h Waste boiler,
5MW Steam turbine generator set

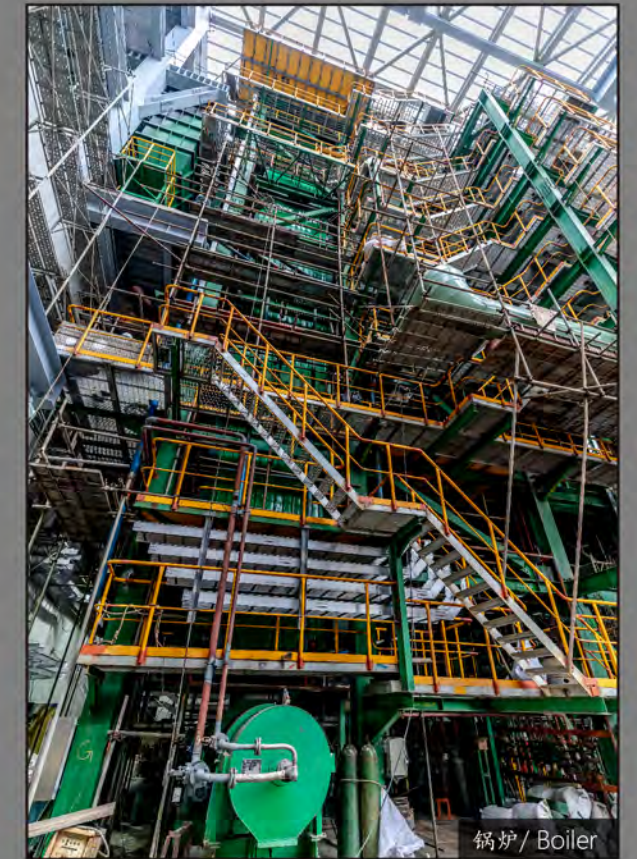
本项目处理污泥及固液体废弃物，汽电共生。附带烟气处理，近零排放。

$NO_x < 20mg/Nm^3$
 $SO_x < 20mg/Nm^3$
烟尘 $< 5mg/Nm^3$

This project of cogeneration aims to deal with sludge, solid and liquid waste. And its discharge of flue gas is roughly to 0 because of the flue gas treatment system.

$NO_x < 20mg/Nm^3$
 $SO_x < 20mg/Nm^3$
Smoke and dust $< 5mg/Nm^3$

- 
燃烧系统
COMBUSTION SYSTEM
- 
汽机系统
TURBINE SYSTEM
- 
水处理系统
WATER TREATMENT
- 
烟气处理系统
FLUE GAS TREATMENT



日皓造纸/JS PAPER
 1×25T/H RDF混烧CFB锅炉岛EPC工程
 1×25T/H RDF MULTIFUEL COMBUSTION
 CFB BOILER ISLAND EPC PROJECT



以20%煤+RDF为燃料，同时掺烧本厂造纸污泥，产生蒸汽，造纸厂自用。附带空污除尘设备（SNCR + SCR，湿法脱硫，布袋除尘），做到近零排放。

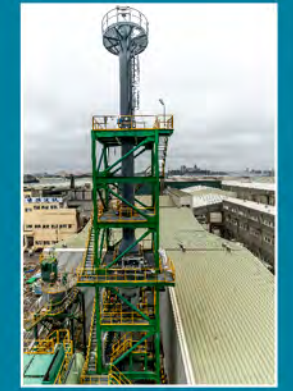
20% coal and RDF used as main fuel, and the paper sludge—the self-produced waste mixed into, produce steam which is fully used by its own the paper mill. Equipped with air pollution removal devices (SNCR+SCR wet desulfurization, bag filter), this set of CFB boiler island can reach nearly zero emissions.



锅炉 / Boiler



锅炉 / Boiler



烟囱脱硫塔 /
Chimney & DeSO_x



氨罐脱硝 /
Ammonia DeNO_x



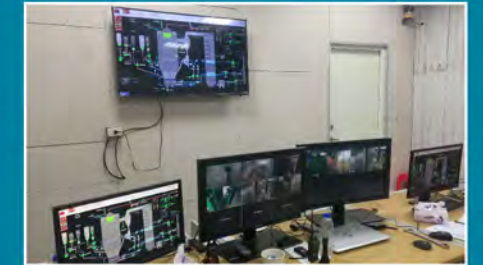
活性炭输送系统/
Activated carbon conveying



布袋除尘器 / Bag filter



气力输灰系统 / Pneumatic ash conveying



控制室 / Control room

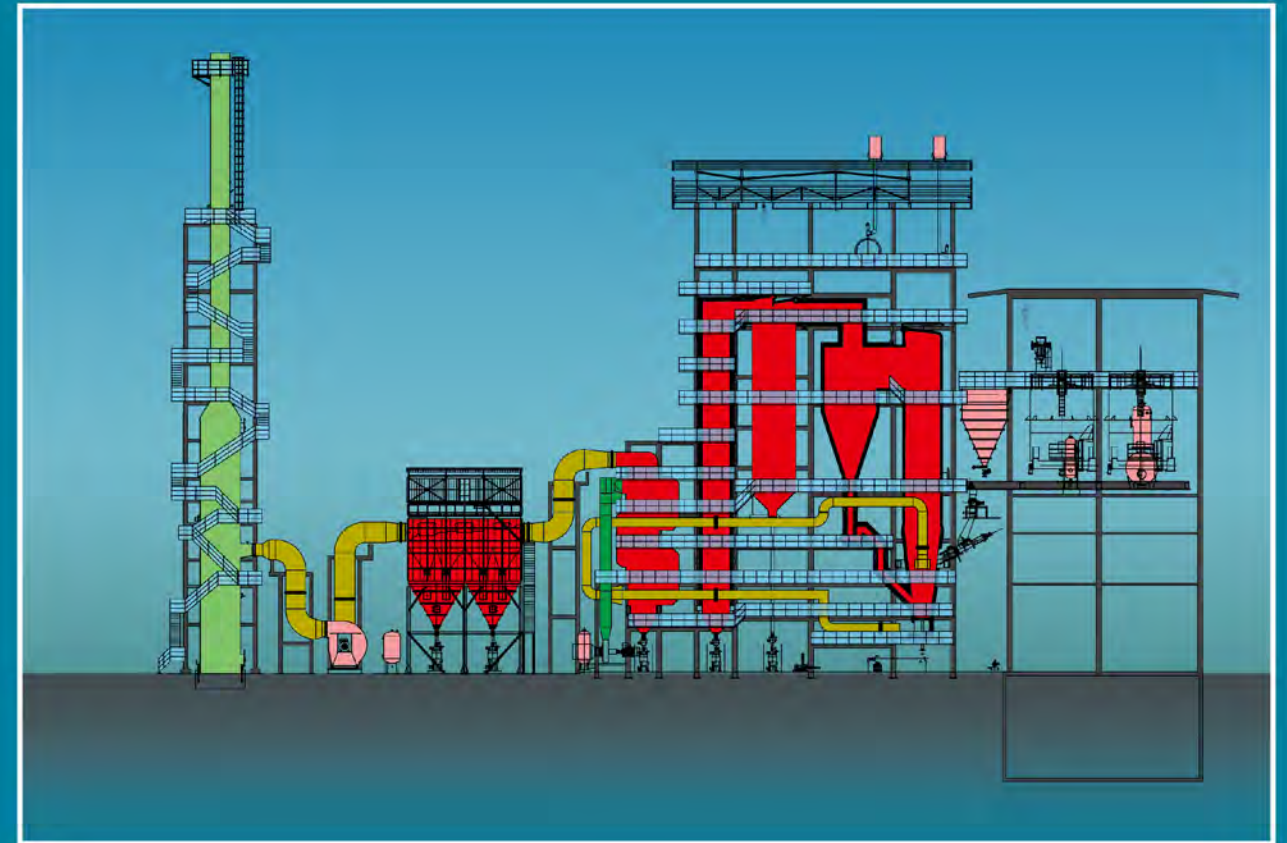
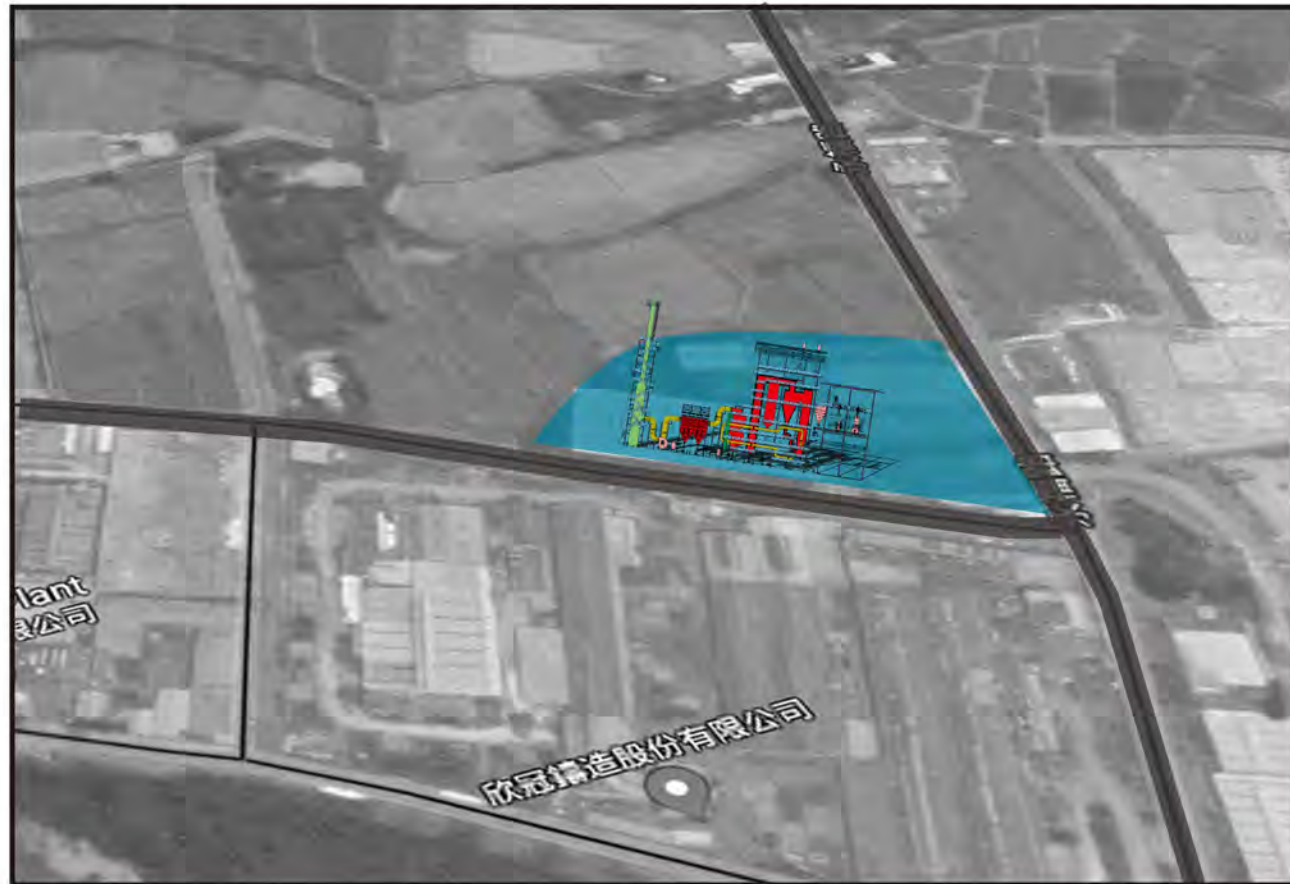


永丰余新屋厂 / YFY

1×70T/H 锅炉岛EPC工程 (RDF+废轮胎)

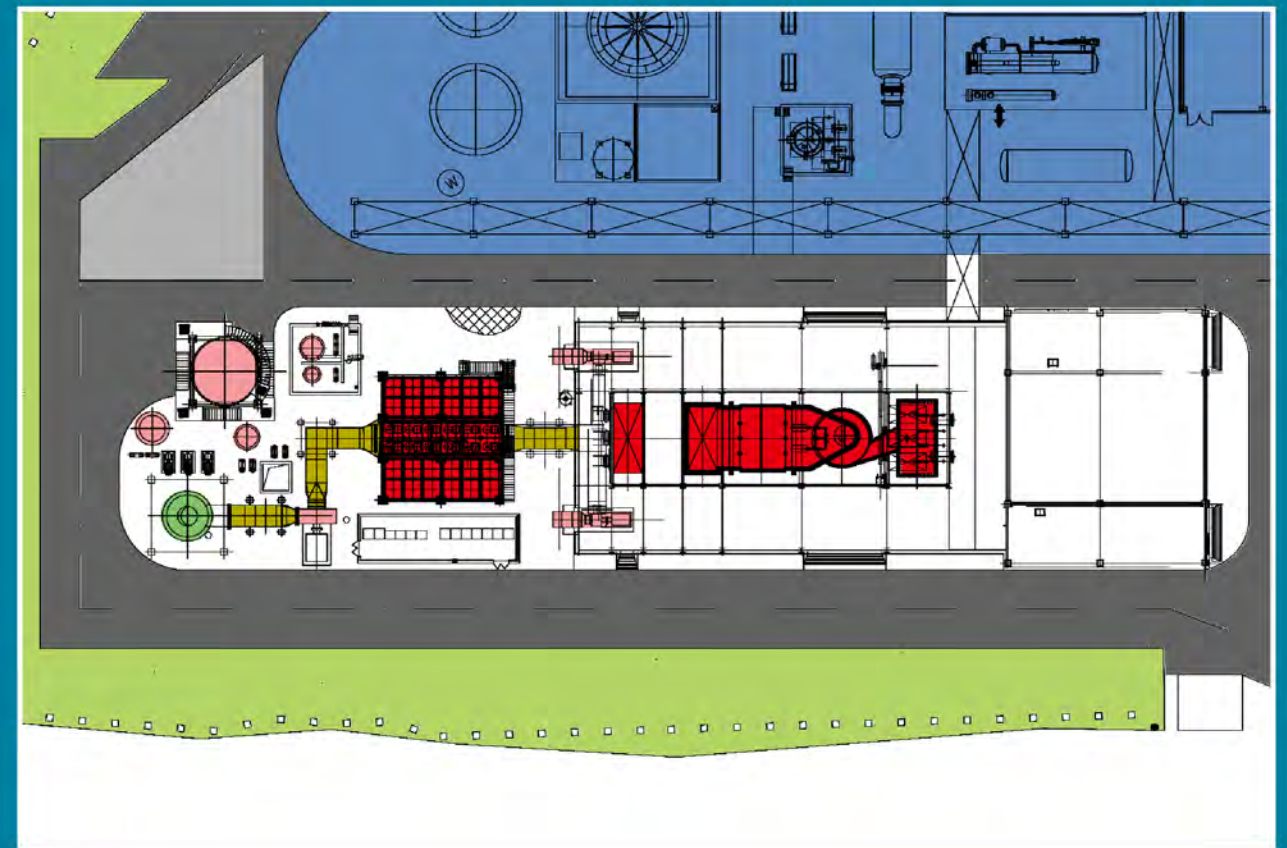
BOILER ISLAND EPC PROJCT (RDF+SCRAP TIRES)

执行阶段 / EXECUTION PHASE



EPC项目执行一般流程

EPC PROJECT EXECUTION FLOW



印尼 PT.CHEIL JEDANG INDO.

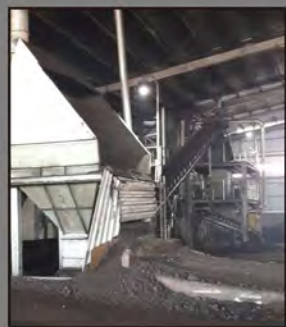
厂区用飞灰除尘系统

2×33m³/h , 2×24m³/h, 1×19m³/h

PT.CHEIL JEDANG INDO., INDONESIA

DUST REMOVAL SYSTEM

2×33m³/h , 2×24m³/h, 1×19m³/h



印尼 PT.BUKIT MURIA JAYA

1×20T/H 锅炉ESP

及气力输送系统

PT.CHEIL JEDANG INDO., INDONESIA

1×20T/H BOILER ESP

AND PNEUMATIC CONVEYING SYSTEM



其他备品配件 OTHER ACCESSORIES



破碎机
Crusher



滚轴筛分机
Roller screen separator



冷渣机
Ash cooler



天然气点火配件
Natural gas ignition accessories



锅炉配件
Boiler accessories



风帽
Air nozzle



省煤器
Economizer



吹灰器配件
Soot blower accessories



风机备件
Fan spare parts

04. 研究成果 RESEARCH FRUITS

飞灰熔融炉 FLY ASH MELTING FURNANCE

通过对等离子技术及配套炉体结构技术的开发应用，利用等离子的高温特性对固体废物进行全面、彻底地分解、熔融。最终真正达到固体废物无害化、减量化及资源化的目的，并形成工程应用的配套设备。

With development and application of plasma and relatd furnace structure technology, the solid waste can be thoroughly decomposed and melted by utilization of the plasma's high-temperature feature. That will really achieve that the solid waste can ultimately turn to be harmless, dematerialization and availability that this technology can be used on appropriate equipment for engineering application.

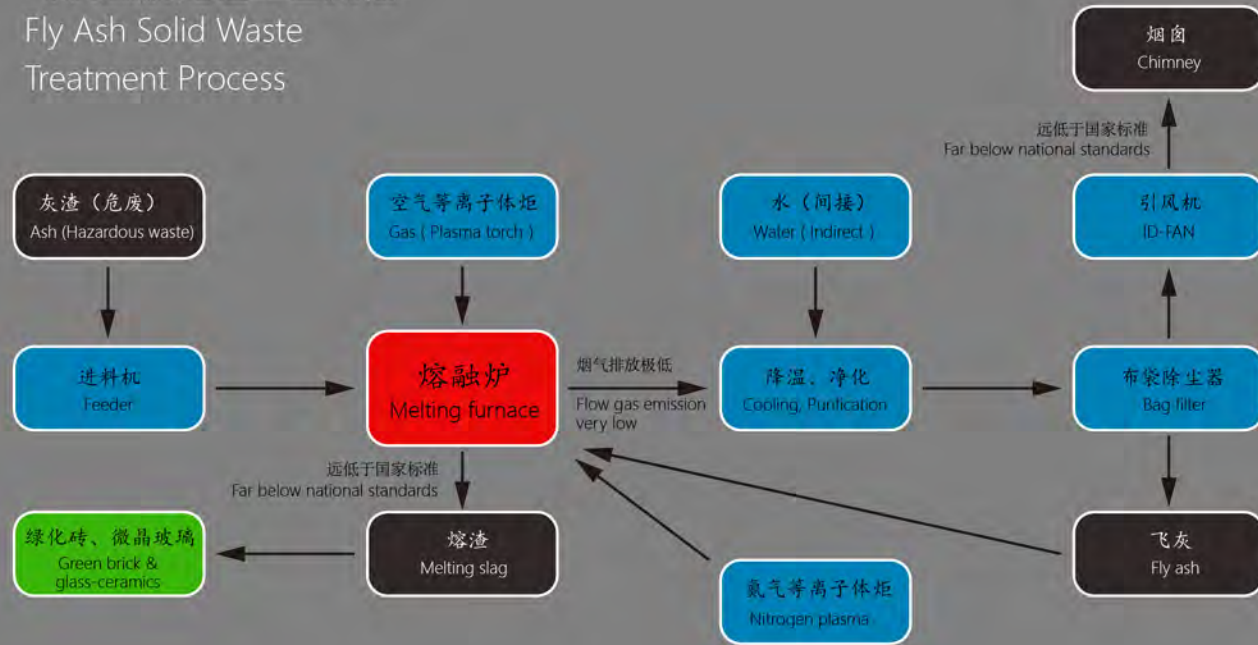


废弃物玻璃化处理装置
WASTE VITRIFICATION DEVICE

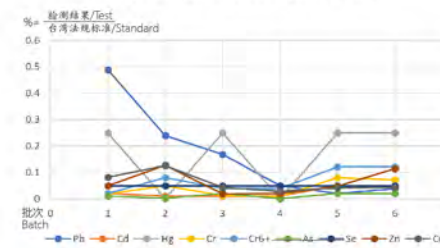


飞灰固废处理工艺流程

Fly Ash Solid Waste Treatment Process

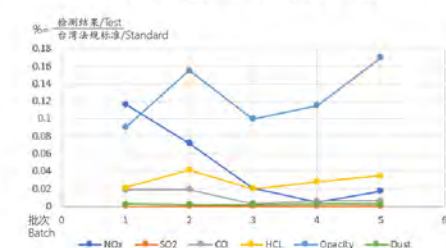


水淬熔渣TCLP溶出结果



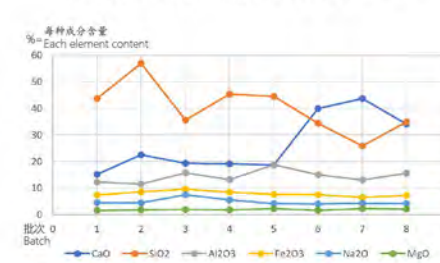
重金属离子远远低于规范标准。
Results of water quenching slag TCLP melting and heavy metal ions are far below the standard

各批次测试运行废弃监测



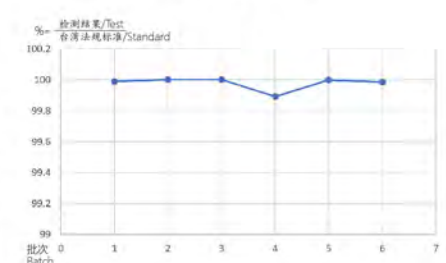
氧化物含量远低于标准。
Waste monitoring of each batch of test operation and the oxide content is far below the standard.

水淬熔渣化学组成成分分析结果



Analysis results of chemical composition of water quenching slag and each element content ratio.

二恶英去除率



二恶英几乎去除。
Dioxin removal rate and dioxins are almost removed



证书
Certificate



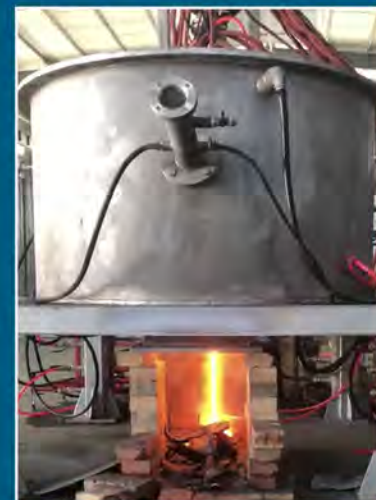
等离子发生器
Plasma generator



等离子发生器测试
Plasma generator test



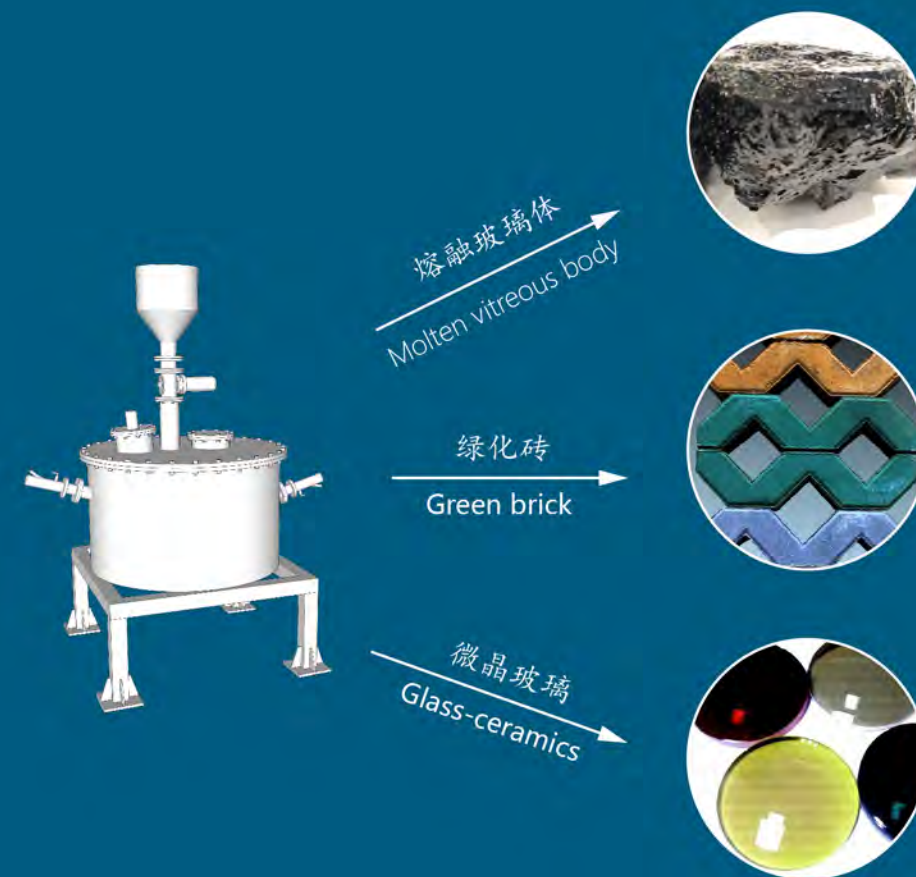
电源柜
Power cabinet



飞灰熔融测试
Fly ash melting test



飞灰固废与熔融玻璃体
Fly ash solid waste and molten vitreous body



利用等离子高温熔渣易加工的优势，开发其高价值的产品，比如绿化砖、工艺品、微晶玻璃等等，可直接补加晶核材料或其他所需材料，方便加工，较普通玻璃厂节省大量能量，增加企业利润。

Utilizing the advantages of easy processing of plasma's high-temperature slag and developing its high value products, such as green bricks, crafts, glass-ceramics, etc., can directly add crystalline core materials or other required materials for easy processing, which saves a lot of energy than ordinary glass factories, and finally increases enterprise's profits.

当下我们以此为荣

WE ARE PROUD TO PRESENT



我们的客户

SOME OF OUR CLIENTS

05. 联系我们 / CONTACT US



印尼BMJ
PT. BUKIT MURIA JAYA



台湾永丰余
YUEN FOONG YU PAPER



台湾正隆
CHENG LOONG CORPORATION



浙江蓝太能源工程有限公司 (总部)
Zhejiang Lantai Energy Engineering Co., LTD.
地址: 杭州市萧山区鸿宁路1909号望京商务中心B座501
ADD: 5/F, Block B, Vertex World, 1909 Hongning Rd, Xiaoshan Dist., Hangzhou
TEL: +86 571 56506300
FAX: +86 571 56506333
E-M: zjltee@163.com



台湾蓝迪工程有限公司
Taiwan Landi Engineering Co., LTD.
地址: 新竹县新丰乡新丰村红毛23-12号3楼
ADD: Building3, #23-12 hongmao, Xinfeng village, Xinfeng Town, Hsinchu
TEL: +886 3-5686800 MOB: +886 937800826
FAX: +886 3-5680390
E-M: liuyuchen66@gmail.com



台湾永成环科
WING SHING HUANKE



台湾日皓
JIH SUN PAPER IND. CO., LTD.



印尼CJ
PT. CHEIL JEDANG INDO.



印尼HUANGA
PT. HUANGA INDO.



印尼DONGJIN
PT. DONGJIN INDO.

印度尼西亚办事处
Indonesia Representative Office
MOB: +62-62-811-334633
E-M: dakila.palomo@hamadaboilerindo.com
ADD: Great Wall Blok C No.28,
Green lake City 15147, Tangerang, Indonesia

菲律宾分公司
Philippines Branch
COMBUSTION RETROFITTING CO., INC.
MOB: +63-946-817-4114
E-M: dakila.palomo@comretro.com
ADD: No.196, Bantug Norte,
Cabanatuan City 3100, Nueva Ecija, Philippines

香港分公司
Hongkong Branch
SFG ENERGERY EQUIPMENT CO., LTD.
TEL: +00852-24051639
E-M: Jone.tong@acoss.com.cn
ADD: Unit 3A, 5/F., Far East Consortium
Building, 121 Des Voeux Road, Central,
Hongkong